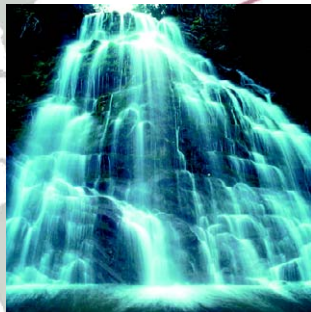
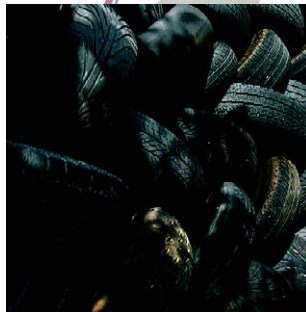


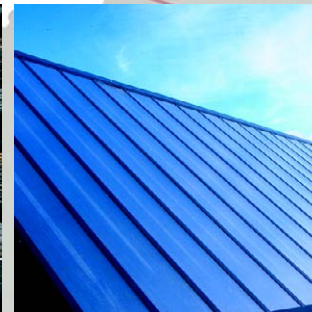
## ENVIRONMENTAL SOLUTIONS



Water



Waste



Renewable  
energy

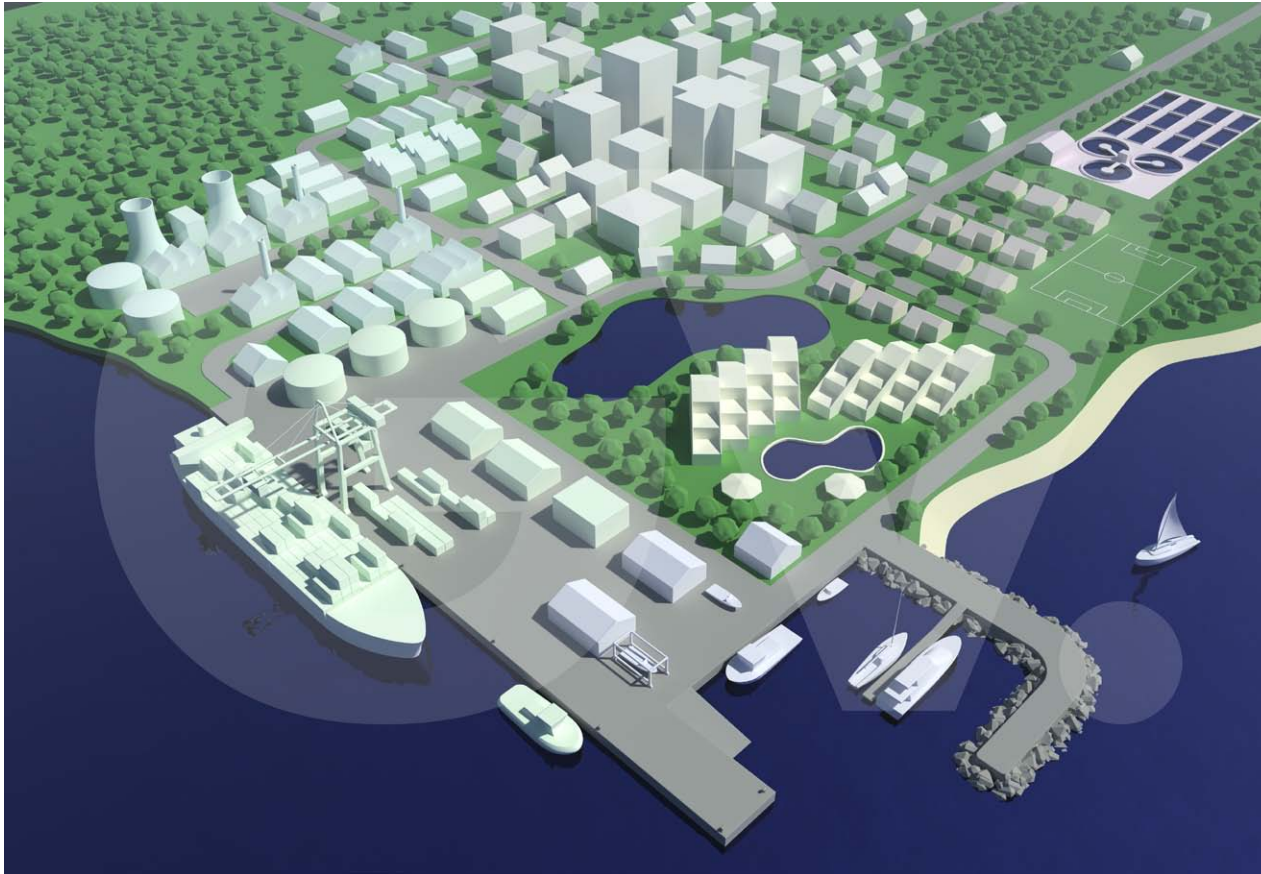


Atmosphere

GV Soluciones has proven experience in the environmental sector giving solutions to companies and institutions worldwide, specialising in water treatment for both civil and industrial sectors.

[www.gvsoluciones.com](http://www.gvsoluciones.com)

## Waste water Treatment Plants from 500 to 20,000 population



### Waste water



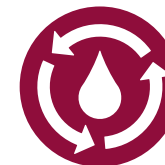
- Dump to sewage system
- Dump to public waters
- Water reusage

### Water purification



- Water for human consumption
- Water for irrigation
- Industrial process water

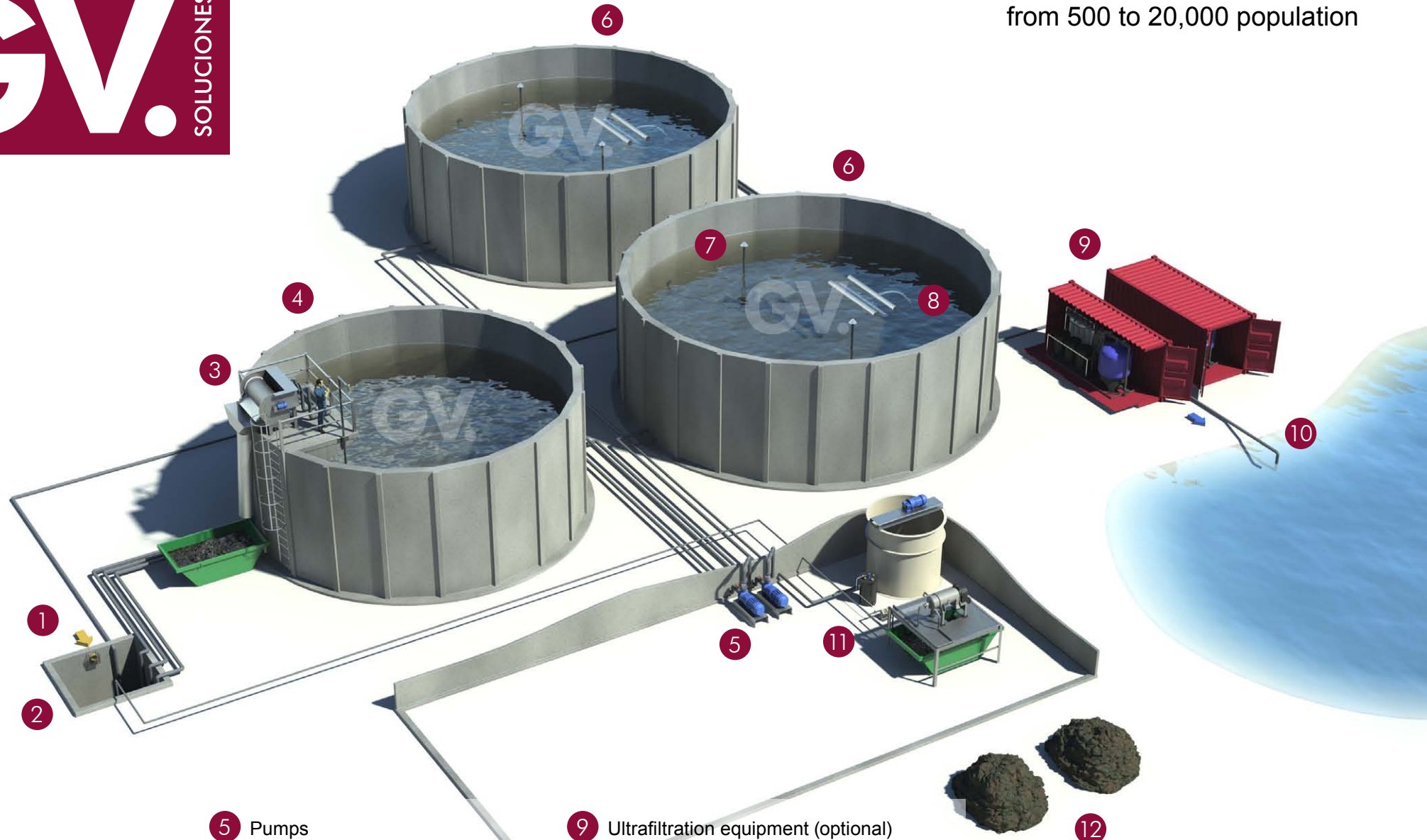
### Water reusage



- Rain water
- Grey water
- Industrial process water

Water is a non renewable and a scarce resource. Recycling it has become a necessity, as is the planning and development of strategies to favor its reusing, setting up of new technologies and more efficient techniques.

GV Soluciones with its verified capacity and experience in water treatment, develops comprehensive actuaciones and offers your company or institution the most advanced technical solutions.



- 1 Feed
- 2 Pumping well
- 3 Rotary screen
- 4 Homogenisation tank

- 5 Pumps
- 6 Secuential batch reactor (SBR)
- 7 Blower pumps
- 8 Floating weir

- 9 Ultrafiltration equipment (optional)
- 10 Water for reuse
- 11 Sludge treatment line
- 12 Composting (optional)

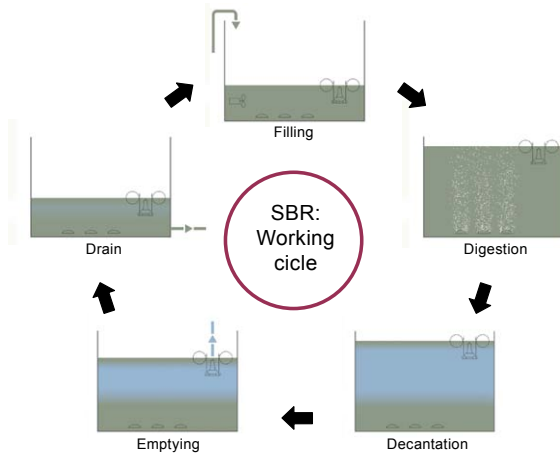


Dimensions for 2,000 population:

- 1 Pumping well
- 2 Homogenisation tank 500m<sup>3</sup>, Ø 11,5m, h 6m
- 3 Biological reactor 750m<sup>3</sup>, Ø 14m, h 6m
- 4 Service building
- 5 Ultrafiltration equipment

Using a sequential batch reactor (SBR) gives various advantages compared to other treatment methods:

- Economical and simple installation
- Reduced area use
- Reduced exploitation costs
- Good elimination of biodegradable matter
- Nitrogen removal
- Good decantation conditions
- Operation flexibility modifying the working cycle times



The modular design of our WwTP allows its adaptation to each case by adding additional equipments:

- Ultrafiltration equipment to allow reusage of treated water
- Sludge composting to allow its recycling as organic fertilizer



Urban waste water depuration samples